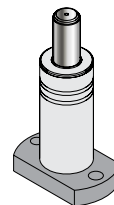


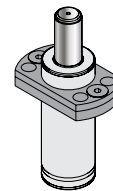
| Código       | Curso Cilindro (mm) | Força daN Pressão à 150bar |        | L K=30 / K=35 (mm) | L min. (mm) | Vol. inicial (cm³) | Kg    | ISO |
|--------------|---------------------|----------------------------|--------|--------------------|-------------|--------------------|-------|-----|
|              |                     | Inicial                    | Final* |                    |             |                    |       |     |
| PNRE-0,1-007 | 7                   | 142,5                      | 224,2  | 44                 | 37          | 1,8                | 0,060 |     |
| PNRE-0,1-010 | 10                  | 142,5                      | 235,0  | 50                 | 40          | 2,4                | 0,064 | ✓   |
| PNRE-0,1-015 | 15                  | 142,5                      | 245,6  | 60                 | 45          | 3,3                | 0,072 | ✓   |
| PNRE-0,1-020 | 20                  | 142,5                      | 251,8  | 70                 | 50          | 4,3                | 0,079 |     |
| PNRE-0,1-025 | 25                  | 142,5                      | 256,0  | 80                 | 55          | 5,3                | 0,087 | ✓   |
| PNRE-0,1-032 | 32                  | 142,5                      | 259,8  | 94                 | 62          | 6,7                | 0,096 |     |
| PNRE-0,1-038 | 38                  | 142,5                      | 262,2  | 106                | 68          | 7,9                | 0,105 | ✓   |
| PNRE-0,1-050 | 50                  | 142,5                      | 265,3  | 130                | 80          | 10,2               | 0,123 | ✓   |
| PNRE-0,1-063 | 63                  | 142,5                      | 267,4  | 156                | 93          | 12,8               | 0,140 | ✓   |
| PNRE-0,1-075 | 75                  | 142,5                      | 268,7  | 185                | 110         | 15,1               | 0,169 |     |
| PNRE-0,1-080 | 80                  | 142,5                      | 269,1  | 195                | 115         | 16,1               | 0,174 | ✓   |
| PNRE-0,1-100 | 100                 | 142,5                      | 270,5  | 235                | 135         | 20,0               | 0,202 | ✓   |
| PNRE-0,1-125 | 125                 | 142,5                      | 271,6  | 285                | 160         | 24,9               | 0,236 | ✓   |

\* Força Final Isotérmica a 20°C, curso totalmente atuado.

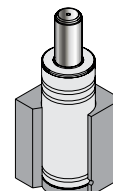
#### Alternativas de montagem



Fixação com flange inferior

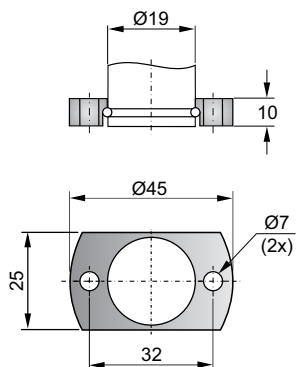


Fixação com flange superior

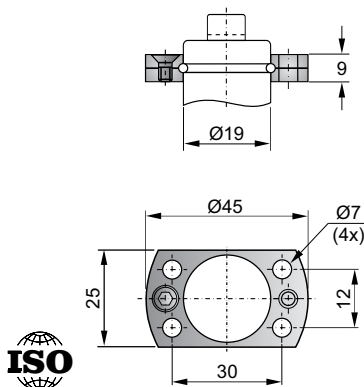


Alojado

#### PNB-58-019



#### PNB-91-019



#### PNB-75-019-VDI

